

Microsoft PowerPoint 2024



I. About PowerPoint

A. What is it?

Microsoft PowerPoint is a powerful tool to create professional looking presentations and slide shows that contain text, images, sounds and/or video.

B. What sets PowerPoint apart from other Microsoft applications?

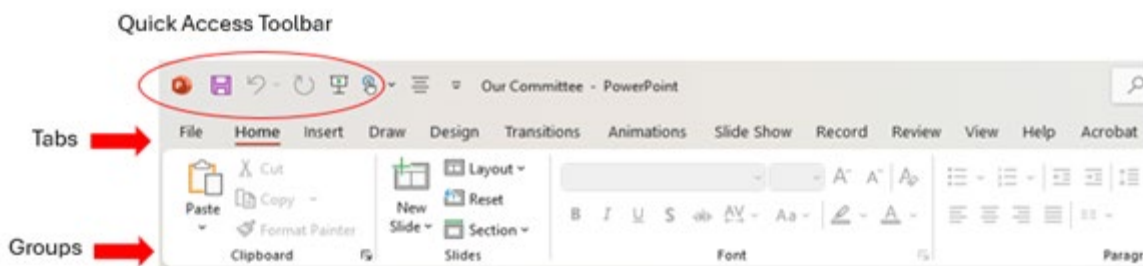
The fact that PowerPoint presents material in a slideshow makes it more interactive than other Microsoft applications. When creating PowerPoint presentations, you can organize your material in the order and manner in which you wish to present it to your audience.

II. Starting PowerPoint

Double-click on the PowerPoint icon on the desktop. Another way to access the program is to click on the Windows icon at the bottom of the screen > Search **PowerPoint**.

- **Begin by clicking on the blank presentation template.**

III. Parts of the Screen and Settings



A. The Ribbon

The Ribbon provides easy access to commands. In order to make finding the right command easy, commands on the ribbon are broken down into categories, each located under the appropriate tab.

B. Tabs

Tabs appear at the top of the Ribbon. To get to the commands under each tab, click on the tab title and the commands for that tab will stretch across the ribbon. Commands under each tab are separated into Groups.

C. Groups

Each Group consists of related commands. The title of each group is at the bottom of the ribbon. The bottom right corner of some groups has a small button called the Dialog Box Launcher. Clicking on this button will open a window with additional options for the group of commands.

D. File Menu

The file menu contains basic file management commands, including New, Open, Save, Save As, Print, and Close.

E. Quick Access Toolbar

The Quick Access Toolbar is located above the Insert tab and provides easy access to the commands you use most frequently. The Save, Undo, Redo/Repeat, and Start from beginning buttons appear on the Quick Access Toolbar by default, but you can personalize the Quick Access Toolbar to fit your own needs. To add additional commands, right click on the command on the ribbon that you would like to add and select *Add to Quick Access Toolbar*. To remove a command, right click on the command on the Quick Access Toolbar and select *Remove from Quick Access Toolbar*.

F. "Search" help tool

The "Search" help tool is located at the top center of the ribbon. Type in your question or request, and a list of options appears below the search box.

G. Default View

The default view for the presentation is Normal and displays the current slide on the right, and the slides pane on the left with thumbnails of all slides in the presentation. Additional views are discussed in section VII.

IV. Creating a presentation

A. Adding Text to Slides

The first slide of our slideshow will be used as our title page.

- Click in the top preset text box and type, *Committee Meeting* (or make up a Committee Name).
- Click in the bottom preset toolbox and type today's date.

B. Inserting New Slides

New slides can be added by clicking the **New Slide button** on the Ribbon under the **Home** tab in the Slides group and also under the **Insert** tab. New slides can be added at any time and there is no limit of how many slides your presentation can contain.



- Click the **New Slide button**. Notice that by not selecting a layout, the New Slide button will insert the same layout as the previous slide.

C. Slide Layouts

The arrow next to the New Slide button allows you to select the layout that will best fit the information you want to display. Slide layouts can be changed at any time.

- Click the **arrow next to the New Slide button**.
- Select the **Two Content layout, shown at right**.

D. Adding Content to Slides

Any data other than text is considered content i.e.: charts, graphs, media, graphics, pictures.

Each layout that has space for content will have a box with eight buttons that make adding content easy. Each button allows you to add different kinds of content.

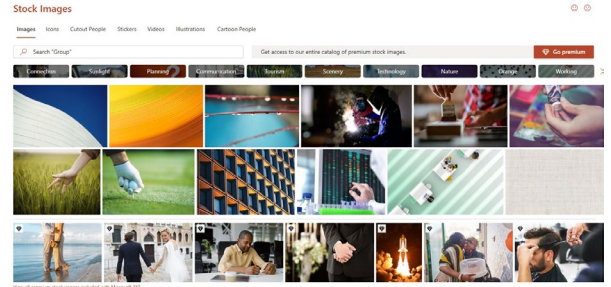
Note: You can add additional content at any time by using the Insert tab on the Ribbon.

1. **Insert Pictures:** On this slide we will insert a picture from Stock Images.
 - Click in the preset title text box at the top of the screen. Type *Committee Members*. You may center your text by using the align buttons in the Paragraph group.
 - Click in the preset text box on the left side of the screen. Type the following:

President
Vice President
Secretary
Treasurer

Note: Hitting the enter key on the keyboard will put the cursor on the next line and automatically key the next bullet to appear.

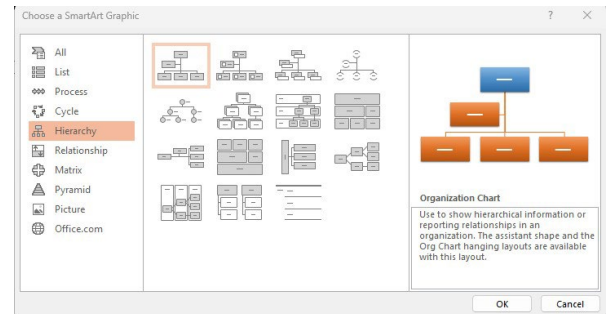
- In the right-hand box click on the first icon for Stock Images.
- Look through the tabs to see options for images, icons, cutout people, stickers, videos, illustrations and cartoon people.
- Return to the **Images** tab and type the word **meeting** in the search box and press Enter.
- Choose a picture by clicking on one from the images displayed and click Insert.



To resize the clip art, drag a sizing handle (white circle) on the corners of your image.

2. **Insert SmartArt Graphics:** On the next slide, we will insert a SmartArt Graphic to display our committee’s organizational chart.

- Under the Home tab, click the arrow next to the **New Slide** button in the Slides group.
- Select the **Title and Content** layout.
- Click in the title text box at the top of the slide. Type **Organizational Chart**. You can change the font and use the center alignment if you wish.
- Click on the **Insert SmartArt Graphic** button on the slide (top right icon).
- Click on the **Hierarchy** category on the left. Select the first option, **Organization Chart**.

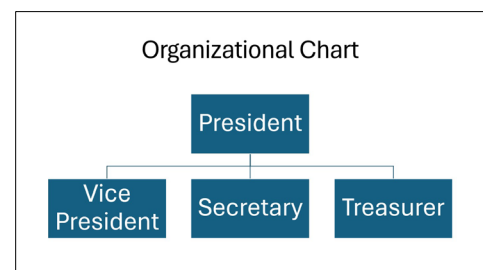


Formatting SmartArt Graphics: Whenever your SmartArt Graphic is selected, formatting options will be visible under the SmartArt Design tab that appears as a new tab on the ribbon. Options for adding additional objects to the graphic, changing the graphic layout, changing the style and color are all found here.

For this slide, we are going to format our SmartArt Graphic to include two levels of an organizational chart. To do this, we need to delete the single box on the second layer of the chart.

- Click on the box on the second level of the chart so that it becomes the four-pointed arrow. Hit the delete key on the keyboard.
- Click in the top box of the chart and type **President**.
- Click in each of the boxes on the bottom level of the chart and type:

- Vice President**
- Secretary**
- Treasurer**



3. Insert Video

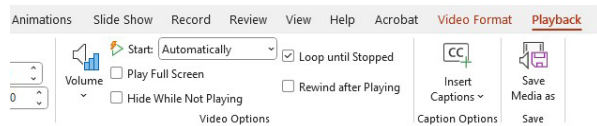
The next slide will include a Video.

- Click the **New Slide** button in the **Slides** group under the **Home** tab.
- Click on the **Layout** button. Select the **Two Content** layout.
- Click on the **Insert Video** button in the bottom row of icons.
- In the window that pops up, browse the desktop for a file called *sample_video.wmv*.
- Double click on the file to insert it.

Next, we need to tell the program when to begin playing our video.

- Choose the **Playback** tab that has appeared as the last tab on the ribbon. Then select **Normal** under **Presentation views**.
- Click the video frame on the slide.
- On the **Playback** tab, in the **Video Options** group, choose **Automatically** from the **Start** list.

Note: Video will display as a freeze frame while in editing mode. Video will play during slide show.



- Click in the preset title text box at the top of the screen. Type **Meeting Agenda**.
- Click in the preset text box on the left side of the screen. Type the following:

Last meeting's minutes
Budget update
New Business

Resizing Videos: You can resize Videos just like Clip Art or Pictures. Click on the Video object to select it. Click and drag white dots to resize image to desired size.

After resizing Video to desired size, we will insert one last slide.

- Click the **New Slide** button in the **Slides** group under the **Home** tab.
 - Click on the **Layout** button. Select the **Title and Content** layout.
 - Click in the preset title text box and type **Thank you for attending**.
 - Click on the first icon below for **Stock Images** and **add a Sticker** of your choosing.
4. **Insert Table (demo only):** When inserting tables, a window will pop up asking how many columns and rows you would like in your table. Once you have formatted your chart, the blank chart will appear for you to insert your data. You can then choose how to format your table from the tools that appear under the **Table Design** and **Table Layout** tabs of the ribbon. Whenever your table is selected, these tools will be available.

5. **Insert Chart (demo only):** After selecting the style of chart you would like to use, an Excel window will appear on the screen giving you a place to import the data that will be displayed on your chart. You can then choose how to format your chart from the tools that appear under the Chart Design tab of the ribbon. Whenever your chart is selected, these tools will be available.

V. Formatting the Slideshow

Once the framework of your slideshow has been set up, you can go back and make changes to its appearance.

A. Changing Font

- Click on the first slide in the Slides pane. We will be editing this slide.
- Drag and select text in the top box.
- Make sure that the Home tab is selected so that you can browse different fonts under the Font group.
- Browse and select different Fonts/Sizes/Styles/Colors/Alignment etc. Click to select.

B. Changing Background

Backgrounds can be changed individually, or one effect can be selected and applied to all slides.

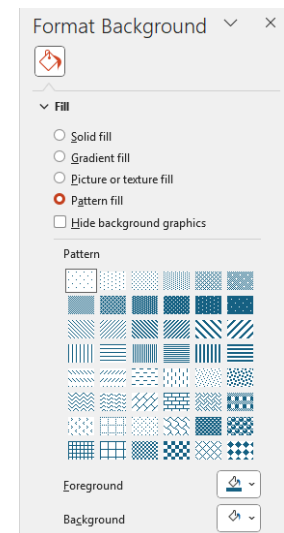
- Click on the **Design tab** on the Ribbon.
- Right click outside the boxes and select **Format Background**.

Fill lets you apply different colors, gradients and patterns to the background of your slide.

Picture allows you to select a Picture as a background of a slide. It can be from a file on your computer, from the clipboard, or from online.

- Browse different fill options and select a background color or effect.

Choose a different background for each slide. Experiment with solid, gradient, texture, and pattern fill.



C. Design Themes

Using PowerPoint's preset Design Themes is an easy way to add a cohesive, professional look to your slideshow. You can set a Design Theme after creating your slideshow or as you are working. The Design Tab, Themes Group on the Ribbon is where the options are located.

D. Themes

Using a Design Theme takes the guesswork out of picking complementary colors and fonts. When you apply a theme to your slideshow, it automatically applies the theme to your entire show.

- Click on the **Design tab** on the Ribbon.
- Under the Themes group, hover your mouse over different themes to preview what it will look like. Themes are in alphabetical order by name. Click the more button to see additional themes.

Fonts will change to go along with the chosen Design Theme. Note that the theme is applied to all of your slides.

E. Variants

Once you're chosen your theme you can modify it by looking under Variants. Here you can change colors, fonts, effects, and background styles.

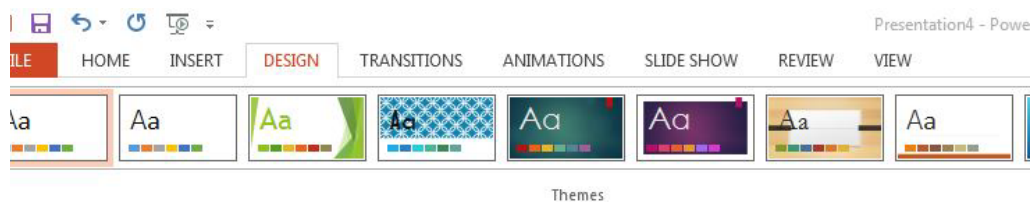
F. Saving

- Click on File > Select **Save As**. Choose Desktop.
- Name your file **Sample Slide Show** and save it.

VI. Transitions and Animations

In order to make your presentation more interesting, animations can be added to the way one slide transitions to the next as well as individual objects on each slide.

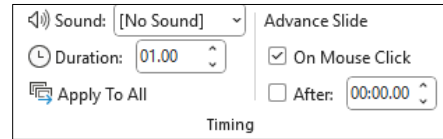
A. Transitions



Slide Transitions are a PowerPoint feature that gives you the option of adding interest to your slideshow by changing the way that one slide goes to the next.

- Select the first slide in the slides pane. We will be editing this slide.
- Select the **Transitions** tab. Note the selections in the transition to this slide group.
- Choose one of the transitions. The preview pane will activate.
- Click preview to see how your choice looks.

- 1. Transition Sound:** You can choose to have a sound accompany the slide transition. Transition sounds are located under the timing group on the far right.



- 2. Duration:** The speed of the slide transition can also be adjusted. See the small icon of the clock under the sound with a box to the right to choose the length (in seconds) of your transitions.

If you are happy with one transition for all slides, you can apply the transition and settings to all slides. The *Apply to All* button is located under Duration.

- 3. Advance Slide:** The default setting for advancing from one slide to the next is on mouse click. This allows you to go through the slideshow at your own pace. If the slideshow will run on its own, you can choose how the amount of time before advancing to the next slide.

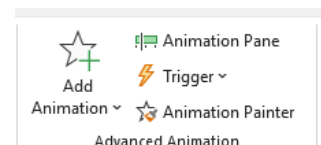
- **Adjust the speed of the transition you have chosen.**
- **Make sure that [Advance Slide on Mouse Click](#) is selected.**

Note: Sounds is disabled on the library's public computers and cannot be heard without headphones.

B. [Advanced Animation](#)

Individual objects on each slide can also be animated. Objects such as text boxes and images can enter, exit, or have emphasis if you choose. In order to add an Advanced Animation effect to an object, select the object first.

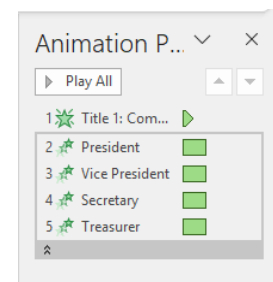
- **Select the [Title Text Box](#) on the first slide of your presentation. Click on the [Animations](#) tab.**
- **Click the [Add Animation](#) button under the Advanced Animations group.**
- **Animation options will appear underneath.**
- **Browse different options under Entrance, Emphasis and Exit; choose one effect, then add another.**
- **Select the [Subtitle Text Box](#) on your first slide that has today's date in it.**
- **Repeat steps from above.**



C. [Reorder Animation](#)

If your animation effects aren't playing in the sequence that you want, you can rearrange them.

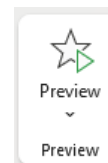
- **Click the object on your slide with the animation effects that you want to reorder.**
- **On the Animations tab, click [Animation Pane](#).**



- In the Animation Pane, click and hold the animation effect you want to move, and drag it up or down to a new position. In the picture at right, we're moving the first animation effect down below the third one.
- A red line will appear when you reach the new position. Release the mouse button to finalize the move.

D. Preview

To preview all of the effects that you have chosen for a slide together, click on the [Preview button](#) under the Preview group or click on Play All in the Animation pane.



VII. Play Time

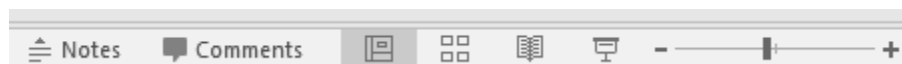
Take the next 10 or 15 minutes to go back through your slideshow and customize it. Apply changes to the remainder of slides.

- Change fonts.
- Change backgrounds.
- Rearrange objects on the page.
- Apply Slide Transitions.
- Add Animations.

When you finish, we will view our slideshow.

VIII. View

The View tab on the Ribbon gives you options for viewing your slideshow. Refer to the Presentation Views group under the View tab for viewing options.



1. **Normal view** is the default setting for editing your slides. This displays slide thumbnails on the left and a large window showing the current slide.
2. **Outline view** brings the text of your slides into prominence. This is helpful when you have a long presentation.
3. **Slide Sorter** lets you view all of your slides at once. This is a good view for rearranging your slides; just click and drag them where you want them.
4. **Notes Page** allows you to add notes with each slide that will not be visible during the slideshow. This is a convenient option when slideshows will be shared with business colleagues that may need additional information when viewing the slideshow.

5. **Reading View** fills the PowerPoint window with a preview of your presentation. It includes easily accessible navigation buttons at the bottom-right.

Note that these views can be accessed at the bottom of each screen:

IX. The Slide Show tab

The Slide Show Tab includes options for how to start the slideshow.

Choose From Beginning. This will take up the entire screen. To exit the Slide Show View, navigate through slides to the end of the show, or hit the Esc key at any time.

- **Click on Slide Show tab on the ribbon and select From Beginning.**
- **Clicking your mouse will advance you through the slide show.** (On pages that have custom animation, clicking the mouse will cue the next action.)
- **You can navigate through your show using the forward/backward arrows on your keyboard.** If you look to the lower left-hand corner of your screen during the slide show, you will also very faintly see buttons for navigation.

Once you are satisfied with your slide show, you can save it to your hard drive or external drive. It is then accessible just like any other document (Word, Excel, Publisher, etc...)

- **Click the diskette icon  to Save your slideshow.**
- **Click the X in the upper right corner of the screen to Close.**

X. PowerPoint Help System

At any time while in PowerPoint you can use the PowerPoint Help System to get answers to questions. You turn on the Help feature by clicking on the Question Mark in the Help tab. You can pose questions by typing in a subject term, such as colors, web page, borders, etc. When you enter a term PowerPoint responds with a variety of topics related to the term.

Thanks for Attending!